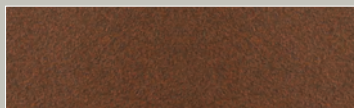


## PREMIUM POWDER COATING COLORS | HOSPITALITY & RESIDENTIAL

**ULTRA DURABLE** | Increased Scratch & Corrosion Resistance

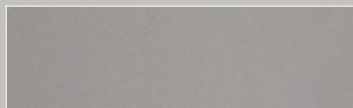


**F71 - RUST**

Polyester

Application : Frames / Table Top / Shell

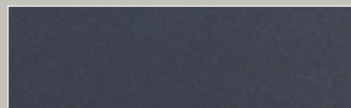
**NEW**



**F69 - CHAMPAGNE**

Polyester

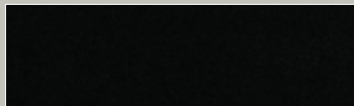
Application : Frames / Table Top / Shell



**F49 - IRON BLACK**

Polyester

Application : Frames / Table Top / Shell

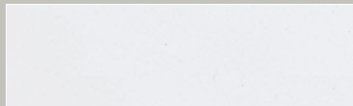


**F77 - JET BLACK**

Polyester

Application : Frames / Table Top / Shell

**NEW**

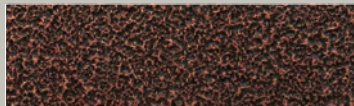


**F50 - COTTON**

Polyester

Application : Frames / Table Top / Shell

**VINTAGE METALS** | Intentional Imperfections



**F65 - NEO BRONZE (hammered)**

Polyester

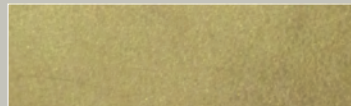
Application : Frames / Shell



**F42 - NEO COPPER**

Polyester

Application : Frames / Shell



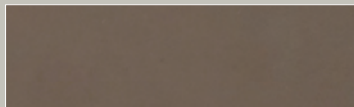
**F41 - NEO BRASS**

Polyester

Application : Frames / Shell

## STANDARD POWDER COATING COLORS | RESIDENTIAL

**GLOSS** | Not advised for marine environments

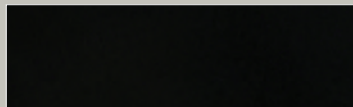


**F78 - TAN**

Polyester

Application : Frames / Shell

**NEW**



**F04 - INK BLACK**

Polyester

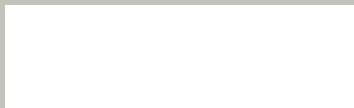
Application : Frames / Shell



**F51 - ORANGE CORAL**

Polyester

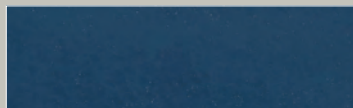
Application : Frames / Shell



**F35 - URBAN WHITE**

Polyester

Application : Frames / Shell



**F59 - AZURE**

Polyester

Application : Frames / Shell

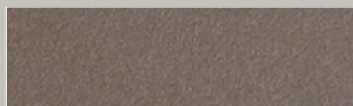
**SAND** | Not advised for table tops / sandy areas / beach / pool



**F03 - WHITE**

Polyester

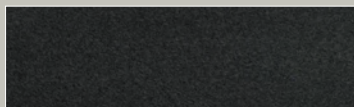
Application : Frames / Shell



**F07 - TAUPE**

Polyester

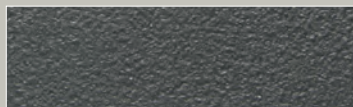
Application : Frames / Shell



**F05 - BLACK**

Polyester

Application : Frames / Shell



**F09 - ANTHRACITE**

Polyester

Application : Frames / Shell

## ALUMINUM

Rigid, yet light weight, alloy 6063 aluminum is a sturdy metal, very well suited for outdoor furniture, with structural anti-rust capacities. Powder coating protects against surface corrosion. Applying electrostatically charged dry paint, baked in an oven, the paint becomes a protective layer with a uniform color and texture.

Powder coated frames can be easily cleaned with a soft brush and soapy water. To handle the occasional scratch mark, we provide touch up kits in a similar color.

## GALVANIZED STEEL

Powdercoated Galvanized Steel, protected with a zinc layer, has high corrosion resistance. Furniture made with a galvanized steel frame is very sturdy, and suitable for windy areas such as rooftops, but not advised for beachfront properties.

The industrial production process creates a random textured surface which is part of the design.

## STAINLESS STEEL

Unmatched in strength and beauty, stainless steel frames are extremely suitable for most outdoor environments.

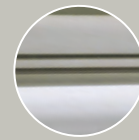
We generally use 304 stainless steel, an iron alloy with a high corrosion resistance, thanks to its unique chrome addition and nickel content, in a hairline finish, with subtle continuous, uni-directional grind marks. This finish will last well, when regularly cleaned, however, susceptible to tea staining is not advised in a marine environment, exposed to chlorinated or salt water.

A number of our collections are available with powder coated 304 stainless steel frames. This finish will perform very well - also in a coastal environment - protected by a UV resistant, durable, low maintenance powder coating on top of a strong epoxy primer.

Marine grade 316 stainless steel in a shiny mirror look finish is used in the ALBATROSS Collection, and available for custom projects, such as beach front properties or cruise ships.



**304 HAIRLINE FINISH**



**316 MIRROR POLISHED**