

TEAK

Teak (scientific name *Tectona Grandis*) is a premium hardwood, native to South East Asia, with a very high natural oil content. Highly resistant to rotting, fungi, warping and water absorption, teak remains durable even in an extreme climate.

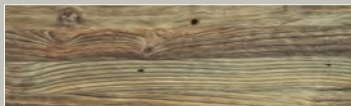
Exposed to sunlight, the color of teak will gradually change from honey brown to silver grey. This weathering does not affect the performance or quality of the timber. Various products are on the market to clean, protect or restore teak.



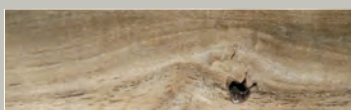
RECYCLED TEAK



Where possible, we use reclaimed teak from abandoned buildings. Recycled teak has character: from holes where bolts were used, to nail holes, damage from hinges and other imperfections; all combine to give recycled teak its unique look. We do not attempt to hide these characteristics; we feel that each aesthetic imperfection in the wood adds to the exceptional feeling in the furniture.



T31 - RECYCLED TEAK BRUSHED



T30 - RECYCLED TEAK SMOOTH SANDED

PREMIUM TEAK

Grade A sustainably harvested teak is carefully sourced from responsibly managed and fully certified teak farms in Java.

Smooth sanded teak looks best with simple, regular cleaning, especially if the furniture is placed under trees or used regularly for dining. Wash with a mild household soap and lukewarm water to avoid mildew, caused organically by dirt gathering in the grains and notches.

All Mamagreen teak furniture is treated with Golden Care "Teak Shield", whose protective layer protects against marks, without stopping the silver grey weathering process.



T24 - PREMIUM TEAK SMOOTH SANDED

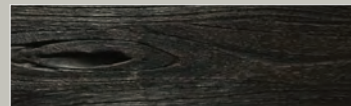


WEATHERED SILVER GREY

DRIFT-LOOK TEAK

MAMAGREEN drift-look teak is showcasing both natural and handmade distress marks. This 'extra-distressed', recycled teak is then finished, either 'as original', or in rich espresso.

Highly contemporary, texture-rich Drift-look teak is used in our iconic AIKO Collection.



F37 - ESPRESSO FINISH



F36 - ORIGINAL FINISH

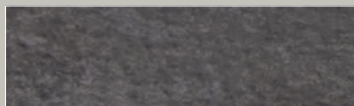
HPL

Italian manufactured High Pressure Laminate (HPL) is an eye-catchingly modern element for outdoor furniture, which will complement any residential or commercial space. Advanced technological manufacturing involves bonding sheets of kraft paper and aluminum with animoplastic resins, using high pressure and heat.

HPL tops do not require particular maintenance that goes beyond normal cleaning with hot water and liquid soap. Common detergents and solvents, thinners and steam can be

used for stubborn stains. Avoid, however, any alkaline or bleach products. Stains on Alpes White could be more visible and a bit more difficult to clean, compared to multi colored stone motives. As HPL has anti-static capacities, table tops do not attract dust. Wax or wax based products should not be applied as protection.

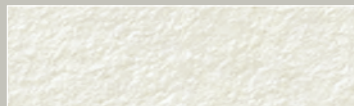
Extreme UV-exposure will cause some discoloration, without impacting the structural integrity of this material; protective covers will extend the beautiful look for many years.



T75 - CONCRETE

Multiple layers of kraft paper with aminoplastic resins | 1.4 gr/cm³
Application : Table Top / Tray

NEW



T38 - ALPES WHITE

Multiple layers of kraft paper with aminoplastic resins | 1.4 gr/cm³
Application : Table Top / Tray



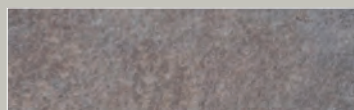
T37 - SLATE

Multiple layers of kraft paper with aminoplastic resins | 1.35 gr/cm³
Application : Table Top / Tray



T61 - CARRARA WHITE

Multiple layers of kraft paper with aminoplastic resins | 1.4 gr/cm³
Application : Table Top / Tray



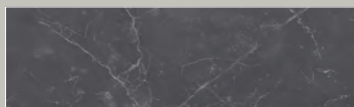
T52 - LATERITE

Multiple layers of kraft paper with aminoplastic resins | 1.4 gr/cm³
Application : Table Top / Tray



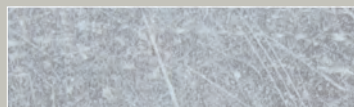
T54 - VOLCANIC ASH

Multiple layers of kraft paper with aminoplastic resins | 1.4 gr/cm³
Application : Table Top / Tray



T62 - CARRARA BLACK

Multiple layers of kraft paper with aminoplastic resins | 1.4 gr/cm³
Application : Table Top / Tray



T39 - SCRATCHED GREY

Multiple layers of kraft paper with aminoplastic resins | 1.4 gr/cm³
Application : Table Top / Tray