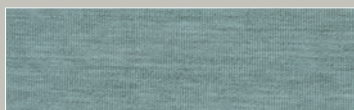


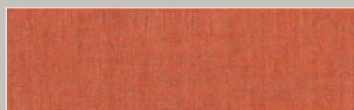
Textiles

PERFORMANCE TEXTILES | Grade A

Cushions / Mixed Applications / Not Suitable for Upholstered Frames



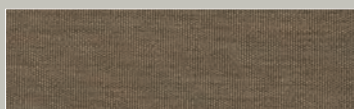
C94 - ACQUA
100% solution dyed acrylic | Waterproof | 300 gr/m²



C98 - CORAL
100% solution dyed acrylic | Water-repellent | 240 gr/m²



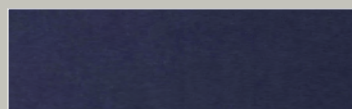
C59 - IBIZA
100% solution dyed acrylic | Water-repellent | 270 gr/m²



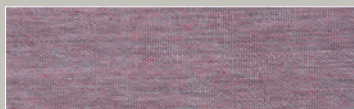
C95 - COCO
100% solution dyed acrylic | Waterproof | 300 gr/m²



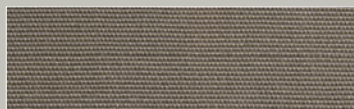
C52 - MINERAL BLUE
100% solution dyed acrylic | Water-repellent | 260 gr/m²



C100 - NAVY BLUE
100% solution dyed acrylic | Water-repellent | 260 gr/m²



C97 - CORAL DUST
100% solution dyed acrylic | Waterproof | 300 gr/m²



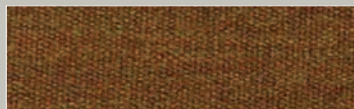
C50 - TAUPE
100% solution dyed acrylic | Water-repellent | 260 gr/m²



C56 - CAROUSEL
59,6% polyester 40,4% acrylic | Water-repellent | 400 gr/m²



C96 - GRAFITO
100% solution dyed acrylic | Waterproof | 300 gr/m²



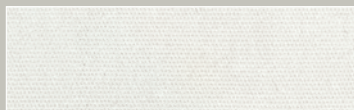
C53 - TEAK
100% solution dyed acrylic | Water-repellent | 260 gr/m²



C57 - DOLCE MANGO
100% solution dyed acrylic | Water-repellent | 260 gr/m²



C48 - BLACK
100% solution dyed acrylic | Water-repellent | 260 gr/m²



C49 - WHITE
100% solution dyed acrylic | Water-repellent | 260 gr/m²



C58 - DOLCE OASIS
100% solution dyed acrylic | Water-repellent | 260 gr/m²



C54 - COAL
100% solution dyed acrylic | Water-repellent | 260 gr/m²



C78 - MINERAL BLUE CHINE
100% solution dyed acrylic | Water-repellent | 260 gr/m²

SIGNATURE TEXTILES | Grade B

Cushions / Pillows / Pads / Not Suitable for Upholstered Frames



C120 - HORIZON LATTE NEW
100% solution dyed acrylic | Water-repellent | 380 gr/m²



C114 - HERITAGE LEAF NEW
100% solution dyed acrylic | Water-repellent | 350 gr/m²



C85B - MARBLE GLACIER BLUE
100% solution dyed acrylic | Water-repellent | 345 gr/m²



C119 - HORIZON STONE NEW
100% solution dyed acrylic | Water-repellent | 380 gr/m²



C109 - HERITAGE GRANITE
100% solution dyed acrylic | Water-repellent | 350 gr/m²



C85I - MARBLE GLACIER ICE
100% solution dyed acrylic | Water-repellent | 345 gr/m²



SAILCLOTHS | Grade C

Mixed Applications / Suitable for Upholstered Frames



C115 - SAILCLOTH SAHARA NEW
100% solution dyed acrylic | Water-repellent | 400 gr/m²



C69 - SAILCLOTH SHADOW
100% solution dyed acrylic | Water-repellent | 400 gr/m²



C70 - SAILCLOTH SAILOR
100% solution dyed acrylic | Water-repellent | 400 gr/m²

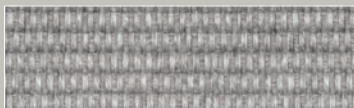


C60 - SAILCLOTH SEAGULL GREY
100% solution dyed acrylic | Water-repellent | 400 gr/m²



SPECIALTY TEXTILES | Grade D

Mixed Applications



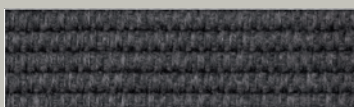
C117 - OTTOMAN ASH NEW
100% solution dyed acrylic | Water-repellent | 632 gr/m²



C125 - ELIOS NIGHTSHADE | WP NEW
Premium synthetic blend, soft touch | Waterproof | 540 gr/m²



C126 - ELIOS OATMEAL | WP NEW
Premium synthetic blend, soft touch | Waterproof | 540 gr/m²



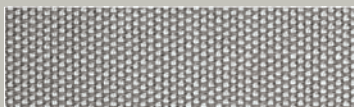
C118 - OTTOMAN STONE NEW
100% solution dyed acrylic | Water-repellent | 632 gr/m²



C111 - ELIOS NIGHTSHADE | Non WP
Premium synthetic blend, soft touch | Water-resistant | 450 gr/m²



C113 - ELIOS OATMEAL | Non WP
Premium synthetic blend, soft touch | Water-resistant | 450 gr/m²



U42 - SAILING SEAGULL GREY NEW
Premium synthetic blend | Water-resistant | 580 gr/m²



C112 - ELIOS COBBLE | Non WP
Premium synthetic blend, soft touch | Water-resistant | 450 gr/m²



LUXURY | Grade E

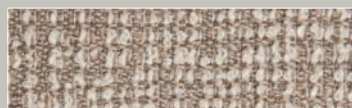
Mixed Applications



C122 - ASPHALT NEW
100% solution dyed acrylic | Water-repellent | 430 gr/m²



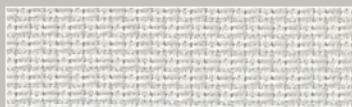
C129 - MIDORI STONE NEW
100% solution dyed acrylic | Water-repellent | 478 gr/m²



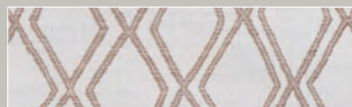
C123 - TORTILLA NEW
100% solution dyed acrylic | Water-repellent | 430 gr/m²



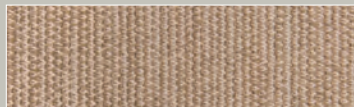
C127 - FISCHER LAGOON NEW
100% solution dyed acrylic | Water-repellent | 470 gr/m²



C121 - RICE NEW
100% solution dyed acrylic | Water-resistant | 490 gr/m²



C128 - VOYAGE DUNE NEW
100% solution dyed acrylic | Water-repellent | 468 gr/m²



C124 - LATTE VELOUR NEW
100% solution dyed acrylic | Water-repellent | 500 gr/m²



SMART TEXTILES | Grade F

Designed for Upholstered Frames



U19 - LOUNGE BLACK
Premium synthetic blend | Water-resistant | 450 gr/m2



U31 - LEISURETEX GREY
Premium synthetic blend | Waterproof | 520 gr/m2



U28 - PINSTRIPE MOCCA
Premium synthetic blend | Mesh | 440 gr/m2



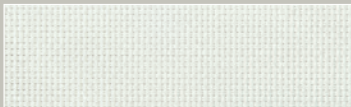
U20 - LOUNGE NUTMEG
Premium synthetic blend | Water-resistant | 450 gr/m2



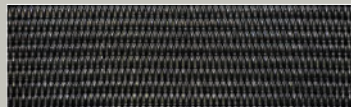
U30 - LEISURETEX BLACK
Premium synthetic blend | Waterproof | 520 gr/m2



U27 - PINSTRIPE SAND
Premium synthetic blend | Mesh | 440 gr/m2



U18 - LOUNGE WHITE
Premium synthetic blend | Water-resistant | 450 gr/m2

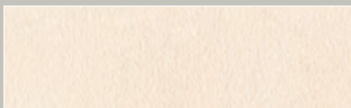


S25 - ROYAL BLACK
Premium synthetic blend | Mesh | 740 gr/m2

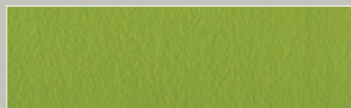


FAUX-LEATHER | Grade G

Designed for Upholstered Frames



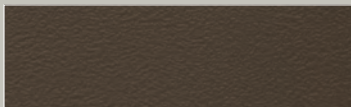
U41 - STAMSKIN AVORIO NEW
Multi-layer composite / Polyamide-jersey | Waterproof | 780 gr/m2



U36 - STAMSKIN LIME
Multi-layer composite / Polyamide-jersey | Waterproof | 780 gr/m2



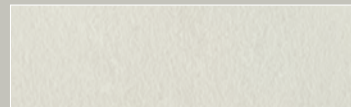
U37 - STAMSKIN PURPLE
Multi-layer composite / Polyamide-jersey | Waterproof | 780 gr/m2



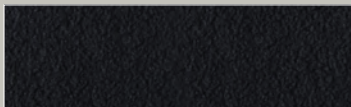
U40 - STAMSKIN BISON
Multi-layer composite / Polyamide-jersey | Waterproof | 780 gr/m2



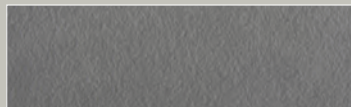
U39 - STAMSKIN ORANGE
Multi-layer composite / Polyamide-jersey | Waterproof | 930 gr/m2



U33 - STAMSKIN WHITE
Multi-layer composite / Polyamide-jersey | Waterproof | 780 gr/m2



U34 - STAMSKIN BLACK
Multi-layer composite / Polyamide-jersey | Waterproof | 780 gr/m2



U35 - STAMSKIN GREY TAUPE
Multi-layer composite / Polyamide-jersey | Waterproof | 780 gr/m2



CASUAL TEXTILES | Grade H

Designed for Decorative Pillows & Pads

Note : Advised for semi-outdoor, store when not in use



C108 - OLEFIN MOONROCK
100% Olefin | Water-resistant | 290 gr/m2



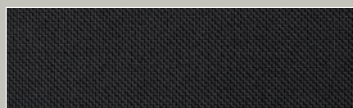
C45 - OLEFIN WHITE
100% Olefin | Water-resistant | 290 gr/m2



C87 - OLEFIN PEAR
100% Olefin | Water-resistant | 250 gr/m2



C107 - OLEFIN PRESTIGE
100% Olefin | Water-resistant | 290 gr/m2



C81 - OLEFIN BLACK
100% Olefin | Water-resistant | 290 gr/m2



C86 - OLEFIN OLIVE
100% Olefin | Water-resistant | 250 gr/m2



C46 - OLEFIN STONE
100% Olefin | Water-resistant | 290 gr/m2



C72 - OLEFIN MARINE
100% Olefin | Water-resistant | 290 gr/m2



C106 - OLEFIN YELLOW
100% Olefin | Water-resistant | 290 gr/m2



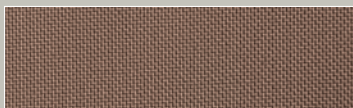
C71 - OLEFIN CREME
100% Olefin | Water-resistant | 290 gr/m2



C91 - OLEFIN MIDNIGHT BLUE
100% Olefin | Water-resistant | 250 gr/m2



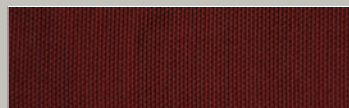
C90 - OLEFIN TANGERIN
100% Olefin | Water-resistant | 250 gr/m2



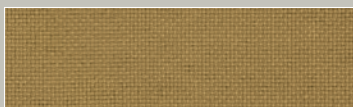
C41 - OLEFIN TAUPE
100% Olefin | Water-resistant | 290 gr/m2



C92 - OLEFIN DEEP SEA
100% Olefin | Water-resistant | 250 gr/m2



C88 - OLEFIN MARSALA
100% Olefin | Water-resistant | 250 gr/m2



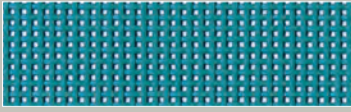
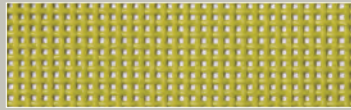
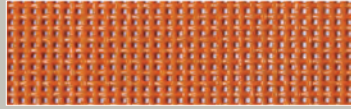
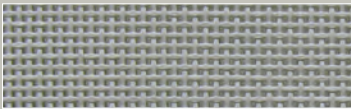
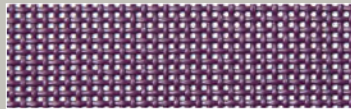
C47 - OLEFIN SAND
100% Olefin | Water-resistant | 290 gr/m2



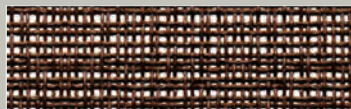
*note that this is not available for standard upholstery cushions. Seat pads and pillows only

REGULAR SLING | Grade K

386

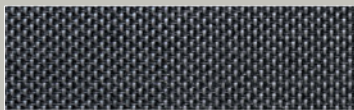
**S09 - BATYLINE ARUBA**Polyester/PVC composite | 500 gr/m²**S03 - BATYLINE LIGHT TAUPE**Polyester/PVC composite | 500 gr/m²**S28 - BATYLINE SASSY GREEN**Polyester/PVC composite | 500 gr/m²**S05 - BATYLINE BLACK**Polyester/PVC composite | 500 gr/m²**S08 - BATYLINE LIME**Polyester/PVC composite | 500 gr/m²**S06 - BATYLINE SILVER**Polyester/PVC composite | 500 gr/m²**S04 - BATYLINE DARK TAUPE**Polyester/PVC composite | 500 gr/m²**S10 - BATYLINE ORANGE**Polyester/PVC composite | 500 gr/m²**S01 - BATYLINE WHITE**Polyester/PVC composite | 500 gr/m²**S02 - BATYLINE GREY**Polyester/PVC composite | 500 gr/m²**S07 - BATYLINE PURPLE**Polyester/PVC composite | 500 gr/m²

PREMIUM SLING | Grade L

**S17 - BATYLINE ABSTRACT GEM CREAM**Polyester/PVC composite | 560 gr/m²**S16 - BATYLINE ABSTRACT GEM TAUPE**Polyester/PVC composite | 560 gr/m²**S13 - BATYLINE HEMP**Polyester/PVC composite | 560 gr/m²

SOFT TOUCH SLING | Grade P

Suitable for Sling & Padded Sling



S29 - EDEN ACIER

PVC composite - synthetic fibers | 450 gr/m²

NEW



S31 - EDEN GLACIAL WHITE

PVC composite - synthetic fibers | 450 gr/m²

NEW



S30 - EDEN BEIGE GREY

PVC composite - synthetic fibers | 450 gr/m²

NEW



S32 - EDEN LIGHT GREY

PVC composite - synthetic fibers | 450 gr/m²

NEW



STRIPES SLING | Grade Q

Note : Not advised for shade structures



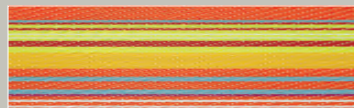
S23 - STRIPE GREEN BARCODE

Premium synthetic blend | 525 gr/m²



S24 - STRIPE RED BARCODE

Premium synthetic blend | 525 gr/m²



S21 - STRIPE ORANGE BARCODE

Premium synthetic blend | 525 gr/m²



TEXTILE GUIDE

380



Waterproof



Water-repellent



Water-resistant



Mesh



Cushions



Not Advised for Cushions



Pillows / Chair Pads



Not Advised for Pillows / Chair Pads



Upholstered Frames



Not Advised for Upholstered Frames



Padded Sling



Not Advised for Padded Sling



Sling



Not Advised for Sling



Sunroof



Not Advised for Sunroof



50% Recycled Fibers



Fire Retardant



IMO 2010 FTP Code Part 8 compliant